

BANCO CENTRAL DE LA REPUBLICA DOMINICANA
DEPARTAMENTO DE SISTEMAS DE PAGOS

Pagos Liquidados por Tipo de Operación
en Cuentas en RD\$ en el Sistema LBTR del BCRD

Fecha	Operaciones Interbancarias			Operaciones con el BCRD			Operaciones Mercado de Valores	Operaciones Seguridad Social	Multilateral Neta ³	TOTAL LBTR
	Entre EIF	Entre Clientes	Total	Operaciones de Mercado Abierto	Otras Operaciones ²	Total				
En millones RD\$										
2008 ^{1/1}	178,771.8	114,891.3	293,663.2	2,945,103.9	854,581.4	3,799,685.3	-	-	331,067.9	4,424,416.4
2009	205,352.3	222,959.7	428,312.0	9,988,763.9	1,328,274.6	11,317,038.5	57,692.9	39,186.2	459,893.0	12,302,122.5
2010	283,589.1	355,810.7	639,399.8	10,513,506.4	1,472,759.7	11,986,266.1	179,948.6	87,618.0	509,443.3	13,402,675.8
2011 ^{4/4}	105,625.5	205,762.7	311,388.2	3,715,377.5	658,616.5	4,373,994.0	119,794.7	38,928.6	253,225.7	5,097,331.2
Mensual										
2008										
Abr	4,006.8	339.2	4,346.0	40,281.6	24,213.4	64,495.0	-	-	6,970.3	75,811.3
May	23,756.9	7,760.2	31,517.1	189,932.3	107,327.0	297,259.3	-	-	39,176.5	367,952.9
Jun	20,068.2	8,358.4	28,426.7	210,660.5	95,160.2	305,820.7	-	-	40,743.1	374,990.5
Jul	20,070.2	12,508.1	32,578.3	170,989.1	109,397.4	280,386.4	-	-	43,056.6	356,021.4
Ago	20,059.9	13,186.8	33,246.7	321,405.8	106,031.8	427,437.6	-	-	40,078.1	500,762.4
Sept	18,860.2	16,152.6	35,012.8	523,756.3	102,257.6	626,013.9	-	-	39,662.6	700,689.2
Oct	27,245.2	20,639.7	47,884.9	502,680.2	103,132.7	605,812.9	-	-	41,030.0	694,727.7
Nov	21,937.1	14,946.3	36,883.4	433,406.1	89,597.2	523,003.3	-	-	38,494.7	598,381.4
Dic	22,767.3	21,000.0	43,767.3	551,992.1	117,464.2	669,456.3	-	-	41,856.1	755,079.6
2009										
Ene	12,900.0	14,605.7	27,505.6	618,060.1	107,707.7	725,767.8	58.2	-	37,597.5	790,929.2
Feb	17,356.4	19,497.3	36,853.7	578,584.5	91,682.1	670,266.6	55.4	-	34,534.6	741,710.3
Mar	15,903.2	21,220.1	37,123.4	906,227.7	111,452.2	1,017,679.9	6,537.2	-	40,228.6	1,101,569.1
Abr	18,570.5	17,209.2	35,779.6	869,088.5	112,753.1	981,841.6	1,608.4	-	37,472.1	1,056,701.7
May	19,424.7	13,315.7	32,740.3	776,515.1	109,299.0	885,814.1	1,163.8	-	40,331.2	960,049.5
Jun	17,964.0	15,651.9	33,616.0	598,033.7	106,457.1	704,490.8	2,734.0	158.5	37,600.7	778,600.1
Jul	16,959.8	17,196.0	34,155.8	610,838.3	106,996.8	717,835.1	2,497.9	5,981.3	38,796.8	799,266.8
Ago	17,746.6	19,277.9	37,024.5	777,570.5	111,337.0	888,907.5	5,313.8	6,596.6	36,562.3	974,404.7
Sept	16,570.2	19,448.3	36,018.6	877,725.7	110,979.1	988,704.8	682.2	6,177.0	39,551.6	1,071,134.2
Oct	19,415.6	22,439.2	41,854.8	1,039,085.3	113,806.9	1,152,892.2	19,281.4	6,563.8	39,169.1	1,259,761.2
Nov	17,121.6	14,640.1	31,761.7	1,065,404.3	99,840.5	1,165,244.8	11,721.5	6,632.3	35,422.1	1,250,782.4
Dic	15,419.8	28,458.4	43,878.1	1,271,630.1	145,963.1	1,417,593.3	6,038.9	7,076.8	42,626.2	1,517,213.3
2010										
Ene	14,952.5	18,626.0	33,578.6	899,923.6	104,600.3	1,004,523.9	4,997.8	6,538.7	36,399.2	1,086,038.2
Feb	18,813.2	20,764.4	39,577.6	1,118,692.2	105,055.9	1,223,748.2	19,076.5	6,829.3	38,746.5	1,327,978.1
Mar	25,156.5	49,419.0	74,575.5	1,151,996.6	139,759.1	1,291,755.7	35,450.3	7,269.8	46,652.9	1,455,704.2
Abr	28,719.3	30,880.2	59,599.4	865,027.9	119,976.4	985,004.2	18,489.6	6,986.2	43,840.2	1,113,919.7
May	29,473.4	25,821.3	55,294.7	965,678.8	126,445.7	1,092,124.5	9,672.9	7,174.3	44,767.0	1,209,033.4
Jun	18,810.9	24,880.0	43,690.9	864,987.3	115,677.8	980,665.1	12,030.7	7,222.1	38,718.4	1,082,327.2
Jul	21,050.7	28,260.5	49,311.2	940,199.7	129,395.0	1,069,594.7	11,597.0	7,331.7	42,044.9	1,179,879.4
Ago	18,304.8	25,470.3	43,775.0	971,664.5	124,425.4	1,096,089.9	17,577.4	7,376.9	42,430.5	1,207,249.8
Sept	26,839.7	29,354.5	56,194.2	943,660.4	118,423.5	1,062,084.0	18,226.3	7,404.4	42,703.3	1,186,612.3
Oct	32,516.0	33,421.5	65,937.5	502,505.2	115,325.6	617,830.8	7,120.5	7,506.5	42,111.9	740,507.2
Nov	25,323.8	32,880.0	58,203.8	488,787.4	123,213.5	612,000.9	12,772.0	7,706.7	42,871.4	733,554.9
Dic	23,628.4	36,033.1	59,661.5	800,382.9	150,461.3	950,844.2	12,937.7	8,271.3	48,156.9	1,079,871.6
2011										
Ene	16,657.6	36,003.8	52,661.3	818,945.8	121,056.8	940,002.5	9,339.4	7,283.7	46,907.6	1,056,194.5
Feb	25,216.5	34,523.8	59,740.4	758,537.6	128,391.5	886,929.1	41,028.8	7,618.3	44,956.7	1,040,273.2
Mar	25,427.9	37,743.0	63,170.9	776,291.8	143,282.3	919,574.1	15,515.7	8,015.5	54,230.6	1,060,506.8
Abr	17,758.0	48,372.8	66,130.7	568,992.1	127,171.2	696,163.3	32,575.4	7,770.2	51,999.4	854,639.1
May	20,565.6	49,119.3	69,684.9	792,610.1	138,714.8	931,324.9	21,335.4	8,240.9	55,131.4	1,085,717.6

**BANCO CENTRAL DE LA REPUBLICA DOMINICANA
DEPARTAMENTO DE SISTEMAS DE PAGOS**

Pagos Liquidados por Tipo de Operación
en Cuentas en RD\$ en el Sistema LBTR del BCRD

Fecha	Operaciones Interbancarias			Operaciones con el BCRD			Operaciones Mercado de Valores	Operaciones Seguridad Social	Multilateral Neta ³	TOTAL LBTR
	Entre EIF	Entre Clientes	Total	Operaciones de Mercado Abierto	Otras Operaciones ²	Total				
En millones US\$										
2008 ^{1/}	5,157.3	3,302.0	8,459.3	84,569.6	24,664.8	109,234.3	-	-	9,554.2	127,247.8
2009	5,720.5	6,210.9	11,931.4	278,103.4	37,005.0	315,108.4	1,602.0	1,086.8	12,814.3	342,542.9
2010	7,712.4	9,679.6	17,392.1	286,681.5	40,073.4	326,755.0	4,906.7	2,383.9	13,863.6	365,301.3
2011 ^{4/}	2,799.4	5,451.0	8,250.4	98,503.9	17,454.6	115,958.5	3,173.5	1,031.7	6,710.3	135,124.3
Mensual										
2008										
Abr	117.9	10.0	127.9	1,185.7	712.7	1,898.5	-	-	205.2	2,231.6
May	698.5	228.2	926.7	5,584.4	3,155.6	8,740.0	-	-	1,151.9	10,818.5
Jun	587.5	244.7	832.2	6,167.4	2,785.9	8,953.3	-	-	1,192.8	10,978.4
Jul	585.6	364.9	950.5	4,988.9	3,191.9	8,180.8	-	-	1,256.3	10,387.6
Ago	578.5	380.3	958.8	9,269.0	3,057.8	12,326.8	-	-	1,155.8	14,441.5
Sept	541.5	463.7	1,005.2	15,036.8	2,935.8	17,972.5	-	-	1,138.7	20,116.4
Oct	778.7	589.9	1,368.5	14,366.4	2,947.5	17,313.9	-	-	1,172.6	19,855.0
Nov	623.3	424.7	1,048.0	12,314.7	2,545.8	14,860.5	-	-	1,093.8	17,002.3
Dic	645.8	595.6	1,241.4	15,656.3	3,331.7	18,987.9	-	-	1,187.2	21,416.5
2009										
Ene	364.7	412.9	777.7	17,474.5	3,045.2	20,519.7	1.6	-	1,063.0	22,362.0
Feb	488.1	548.3	1,036.4	16,271.6	2,578.4	18,850.0	1.6	-	971.2	20,859.2
Mar	445.9	595.0	1,040.8	25,408.1	3,124.8	28,532.9	183.3	-	1,127.9	30,884.9
Abr	518.4	480.4	998.7	24,258.9	3,147.3	27,406.2	44.9	-	1,046.0	29,495.7
May	540.3	370.4	910.6	21,597.9	3,040.0	24,637.9	32.4	-	1,121.8	26,702.7
Jun	500.1	435.7	935.8	16,647.5	2,963.5	19,611.0	76.1	4.4	1,046.7	21,674.0
Jul	471.4	477.9	949.3	16,977.2	2,973.8	19,951.0	69.4	166.2	1,078.3	22,214.3
Ago	492.6	535.1	1,027.7	21,583.1	3,090.4	24,673.5	147.5	183.1	1,014.9	27,046.6
Sept	459.6	539.4	999.0	24,343.4	3,078.0	27,421.4	18.9	171.3	1,097.0	29,707.6
Oct	537.9	621.7	1,159.6	28,787.6	3,153.0	31,940.6	534.2	181.8	1,085.2	34,901.3
Nov	474.4	405.6	880.0	29,518.2	2,766.2	32,284.4	324.8	183.8	981.4	34,654.3
Dic	427.3	788.5	1,215.8	35,235.4	4,044.5	39,279.9	167.3	196.1	1,181.1	42,040.2
2010										
Ene	414.1	515.8	929.9	24,921.7	2,896.7	27,818.4	138.4	181.1	1,008.0	30,075.8
Feb	519.8	573.7	1,093.5	30,909.9	2,902.7	33,812.6	527.1	188.7	1,070.6	36,692.5
Mar	693.1	1,361.5	2,054.6	31,737.8	3,850.4	35,588.2	976.7	200.3	1,285.3	40,105.1
Abr	788.5	847.9	1,636.4	23,750.4	3,294.1	27,044.5	507.7	191.8	1,203.7	30,584.0
May	803.1	703.6	1,506.7	26,314.0	3,445.6	29,759.6	263.6	195.5	1,219.9	32,945.3
Jun	512.2	677.4	1,189.6	23,551.9	3,149.7	26,701.6	327.6	196.6	1,054.2	29,469.6
Jul	572.1	768.0	1,340.1	25,551.5	3,516.5	29,068.0	315.2	199.3	1,142.6	32,065.2
Ago	496.2	690.4	1,186.5	26,337.3	3,372.6	29,709.9	476.4	200.0	1,150.1	32,722.9
Sept	725.7	793.7	1,519.4	25,514.6	3,201.9	28,716.5	492.8	200.2	1,154.6	32,083.5
Oct	874.0	898.3	1,772.2	13,506.1	3,099.7	16,605.8	191.4	201.8	1,131.9	19,903.0
Nov	680.5	883.5	1,564.0	13,133.9	3,310.8	16,444.7	343.2	207.1	1,152.0	19,710.9
Dic	633.3	965.8	1,599.1	21,452.4	4,032.8	25,485.1	346.8	221.7	1,290.7	28,943.4
2011										
Ene	444.8	961.5	1,406.3	21,869.8	3,232.8	25,102.6	249.4	194.5	1,252.7	28,205.5
Feb	669.9	917.2	1,587.1	20,151.4	3,410.9	23,562.2	1,090.0	202.4	1,194.3	27,636.0
Mar	673.4	999.5	1,672.8	20,556.9	3,794.2	24,351.2	410.9	212.3	1,436.1	28,083.2
Abr	469.3	1,278.5	1,747.9	15,038.7	3,361.2	18,399.8	861.0	205.4	1,374.4	22,588.4
May	542.0	1,294.4	1,836.4	20,887.2	3,655.5	24,542.7	562.2	217.2	1,452.8	28,611.3

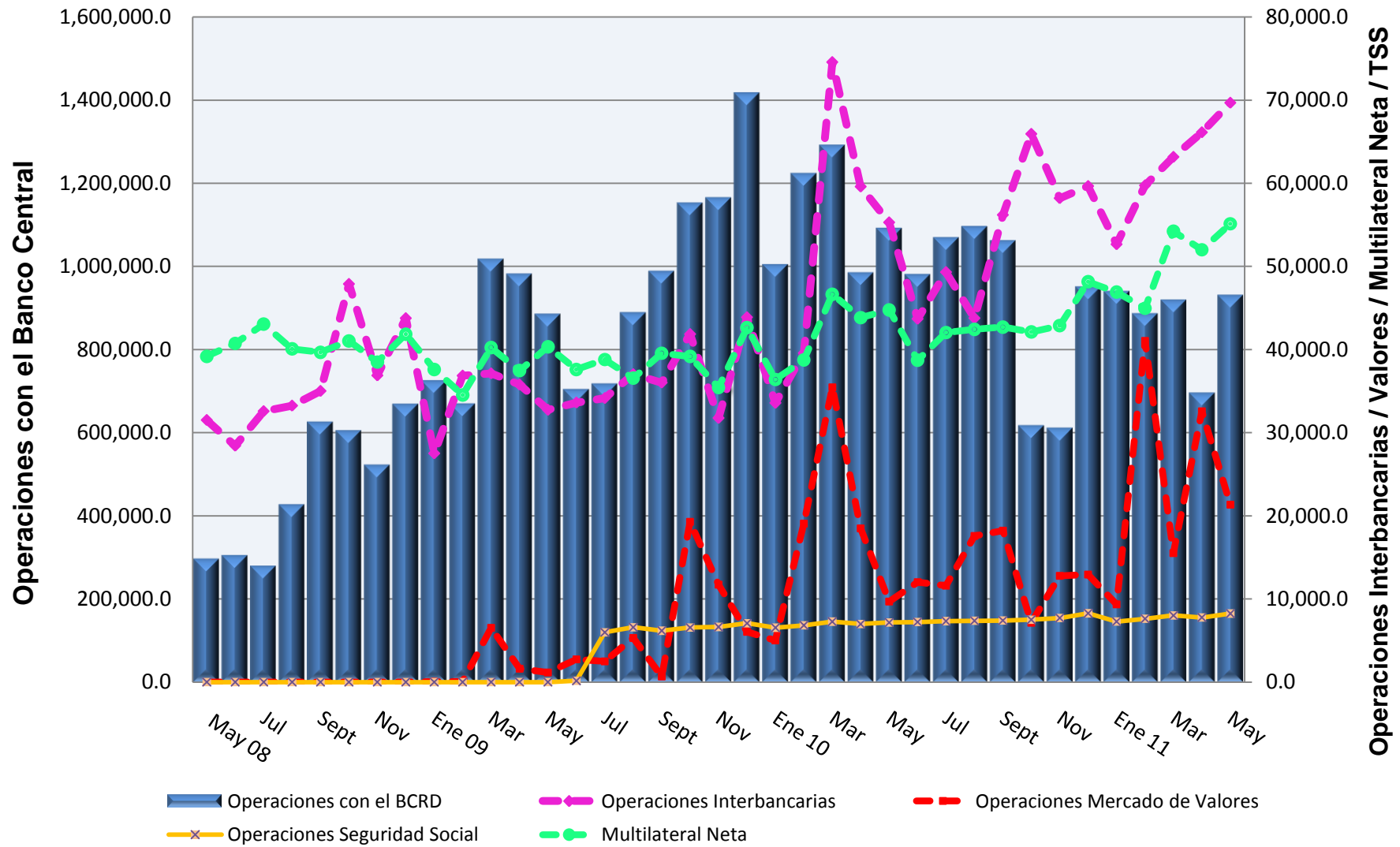
^{1/} Desde el 28 de abril hasta el 31 de diciembre

^{2/} Operaciones de retiro y depósito de efectivo; fondos de contingencia y consolidación; operaciones cambiarias; entre otras.

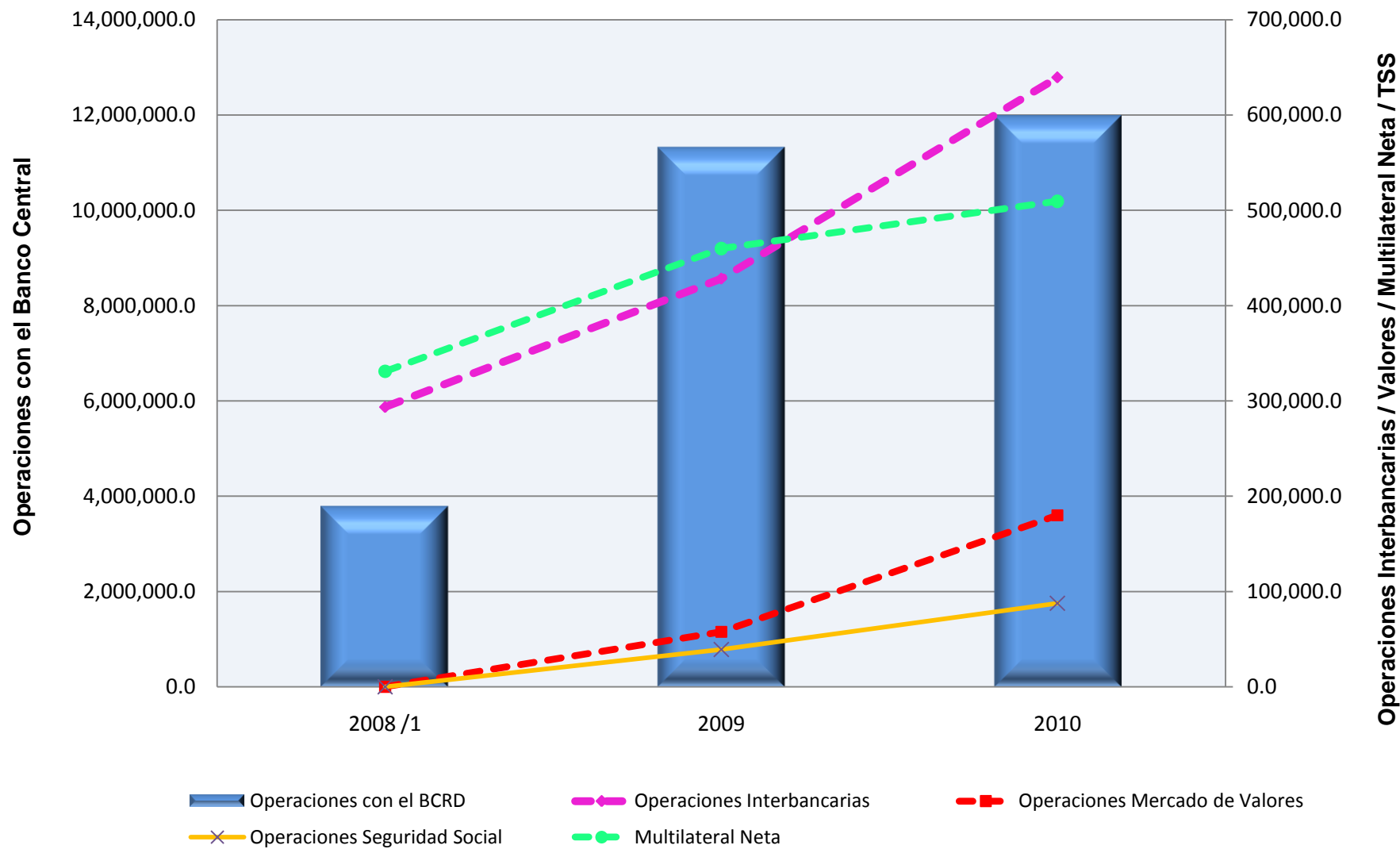
^{3/} Corresponde a los instrumentos de pago de bajo valor (cheques, débitos y créditos directos, pagos móviles, operaciones de tarjetas de débito y crédito en cajeros y puntos de venta) compensados por BCRD y/o administradores de sistemas de pago y liquidados en el Sistema LBTR del BCRD.

^{4/} Hasta el mes de Mayo.

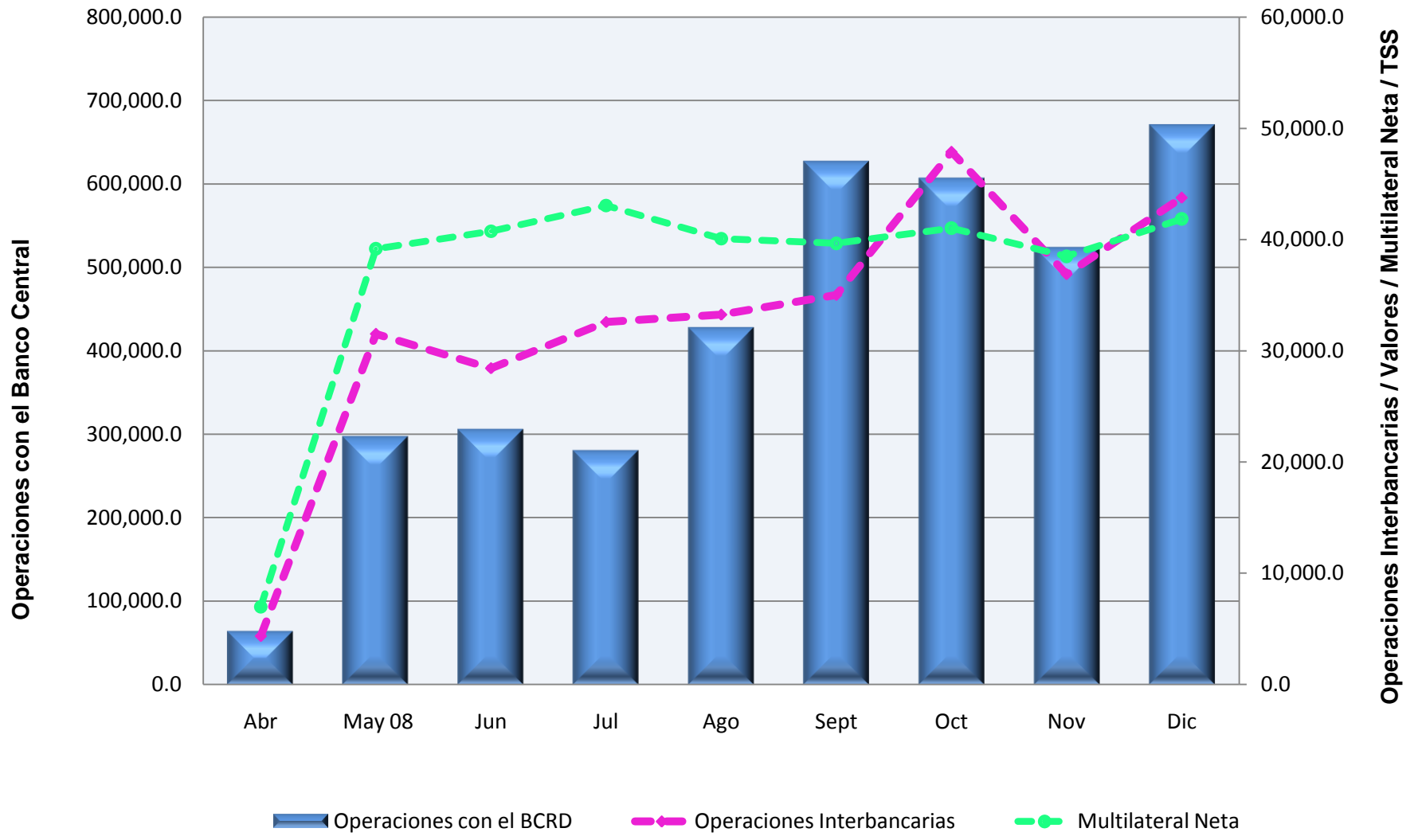
Pagos Liquidados por Tipo de Operación en Cuentas en RD\$ en el Sistema LBTR del BCRD Mayo 2008 - Mayo 2011 (Millones RD\$)



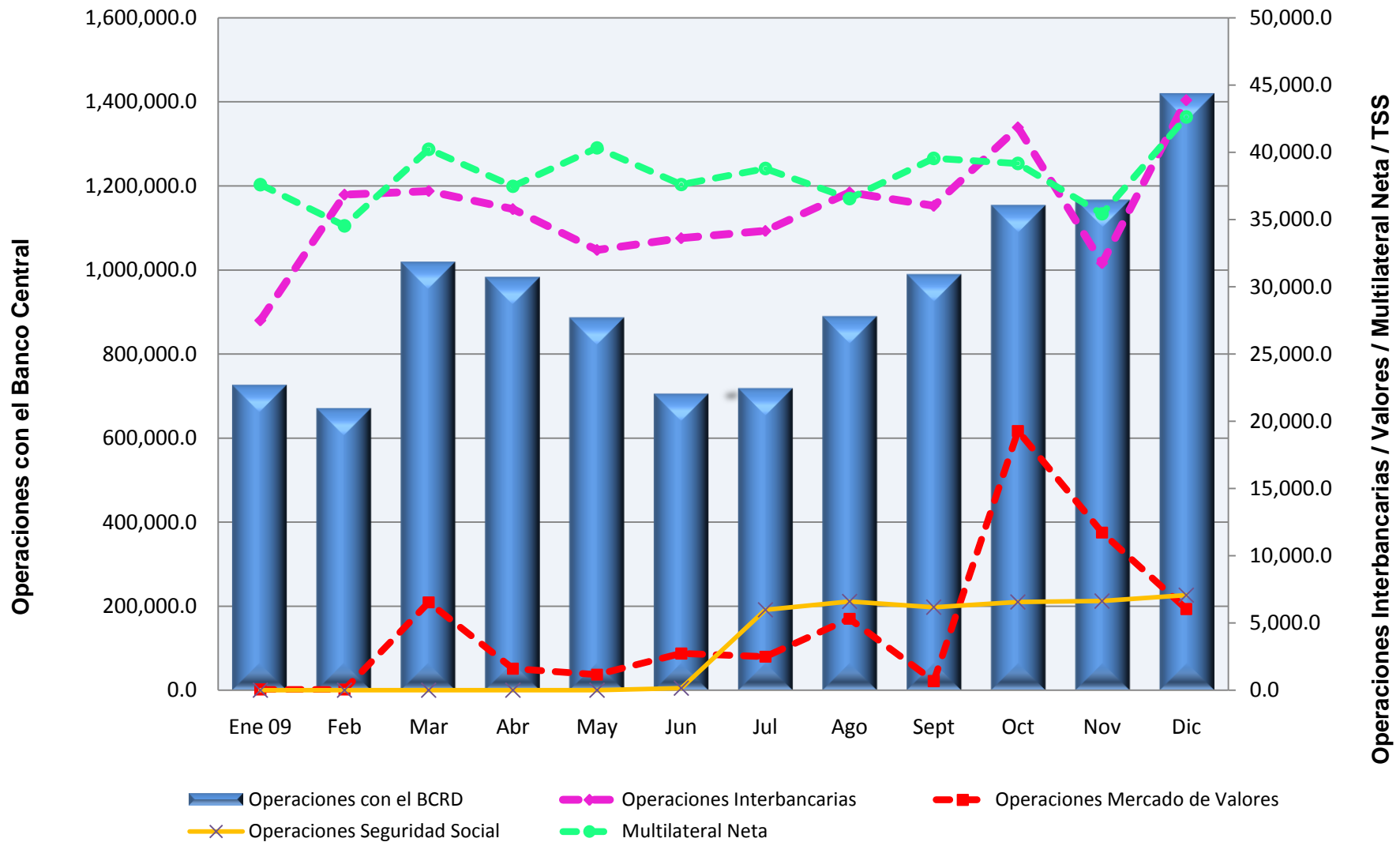
Pagos Liquidados por Tipo de Operación en Cuentas en RD\$ en el Sistema LBTR del BCRD 2008 al 2010 (Millones RD\$)



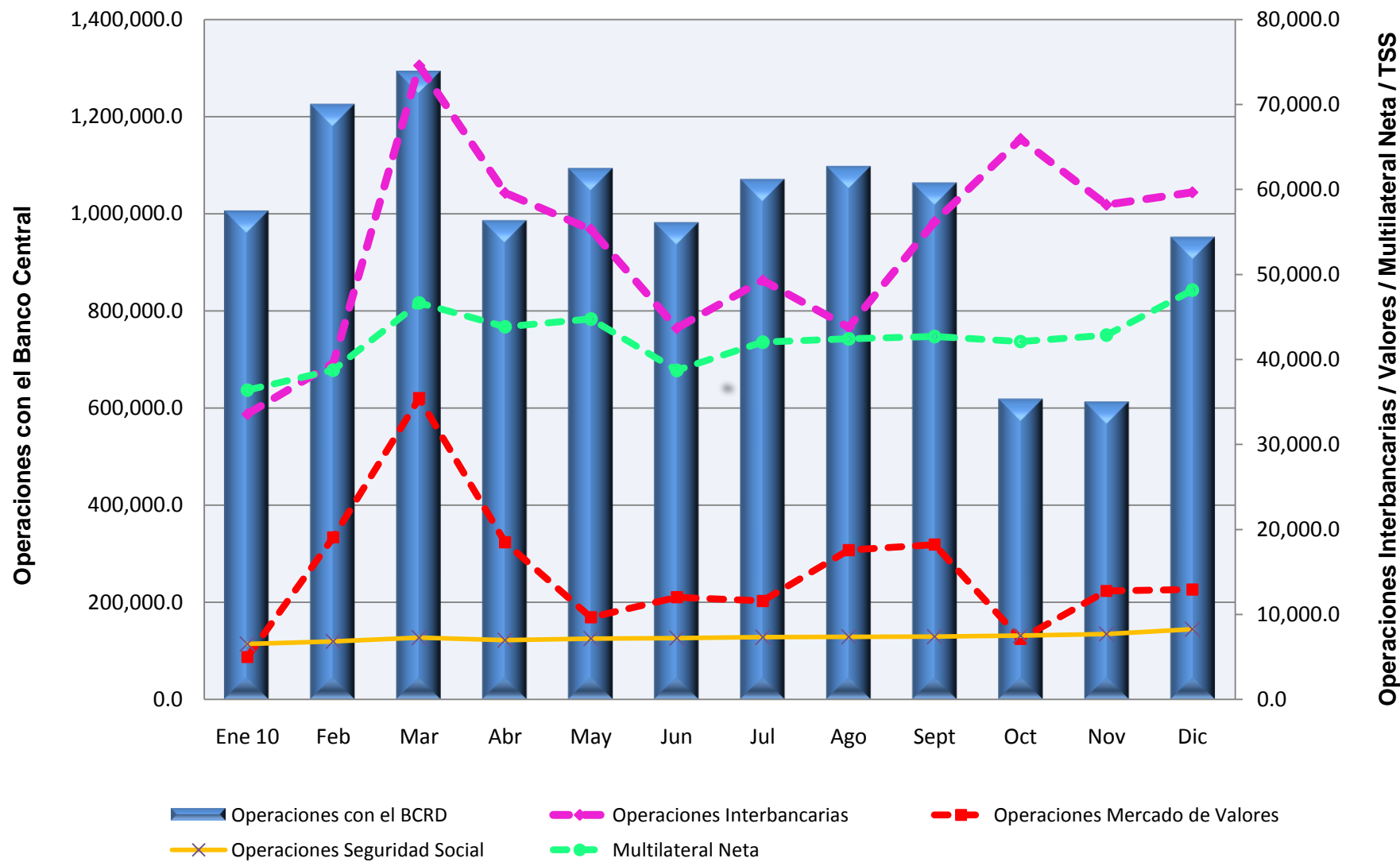
**Pagos Liquidados por Tipo de Operación
en Cuentas en RD\$ en el Sistema LBTR del BCRD
Abril - Diciembre 2008
(Millones RD\$)**



Pagos Liquidados por Tipo de Operación en Cuentas en RD\$ en el Sistema LBTR del BCRD Enero - Diciembre 2009 (Millones RD\$)



Pagos Liquidados por Tipo de Operación en Cuentas en RD\$ en el Sistema LBTR del BCRD Enero - Diciembre 2010 (Millones RD\$)



Pagos Liquidados por Tipo de Operación en Cuentas en RD\$ en el Sistema LBTR del BCRD Enero - Mayo 2011 (Millones RD\$)

